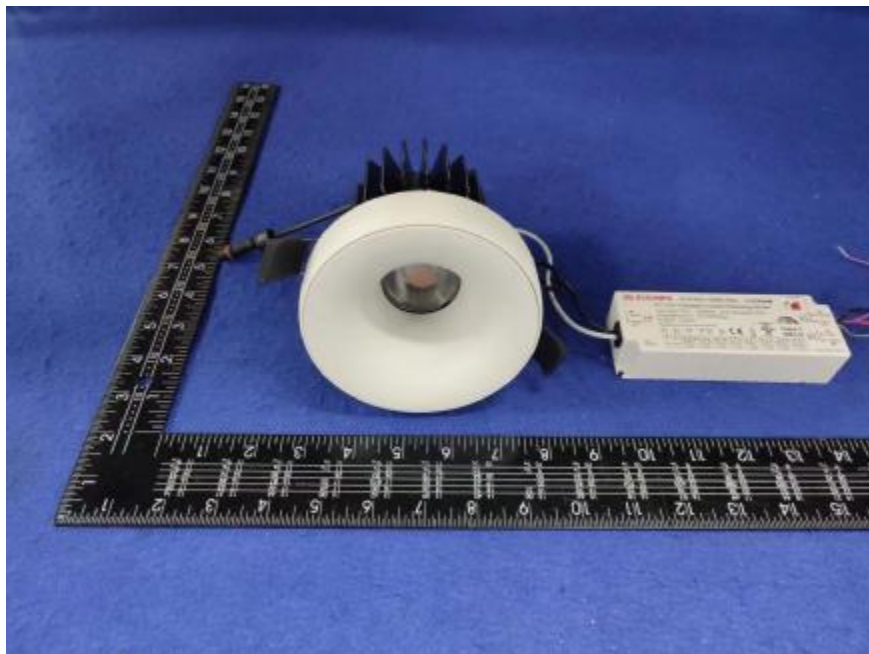


## Luminaire Photograph



Light Output Ratio:	77.2%	
Luminaire Power:	27.42 W	
SHR Nominal:	0.50	Calculated using the TM5
SHR Maximum:	0.65	fine grid method.

C Range: 0 - 360DEG  
C Interval: 30.0DEG  
Test Speed: HIGH  
Temperature: 25.3 °C  
Operators: zoe  
Test Date: 2023-11-4

Range: 0 - 180DEG  
Interval: 1.0DEG  
Test System: EVERFINE GO-SPEX500\_V1 SYSTEM V2.00.461  
Humidity: 65.0%  
Test Distance: 3.160m [K=1.0000]  
Remarks: LAMP: BXRE-30G2000-C-83 Ra: 90  
LENS: PM-1083A 24R  
DRIVER: PUP40A-1WMC-850 700mA  
30minutes warm-up

## LUMINOUS INTENSITY DISTRIBUTION DIAGRAM

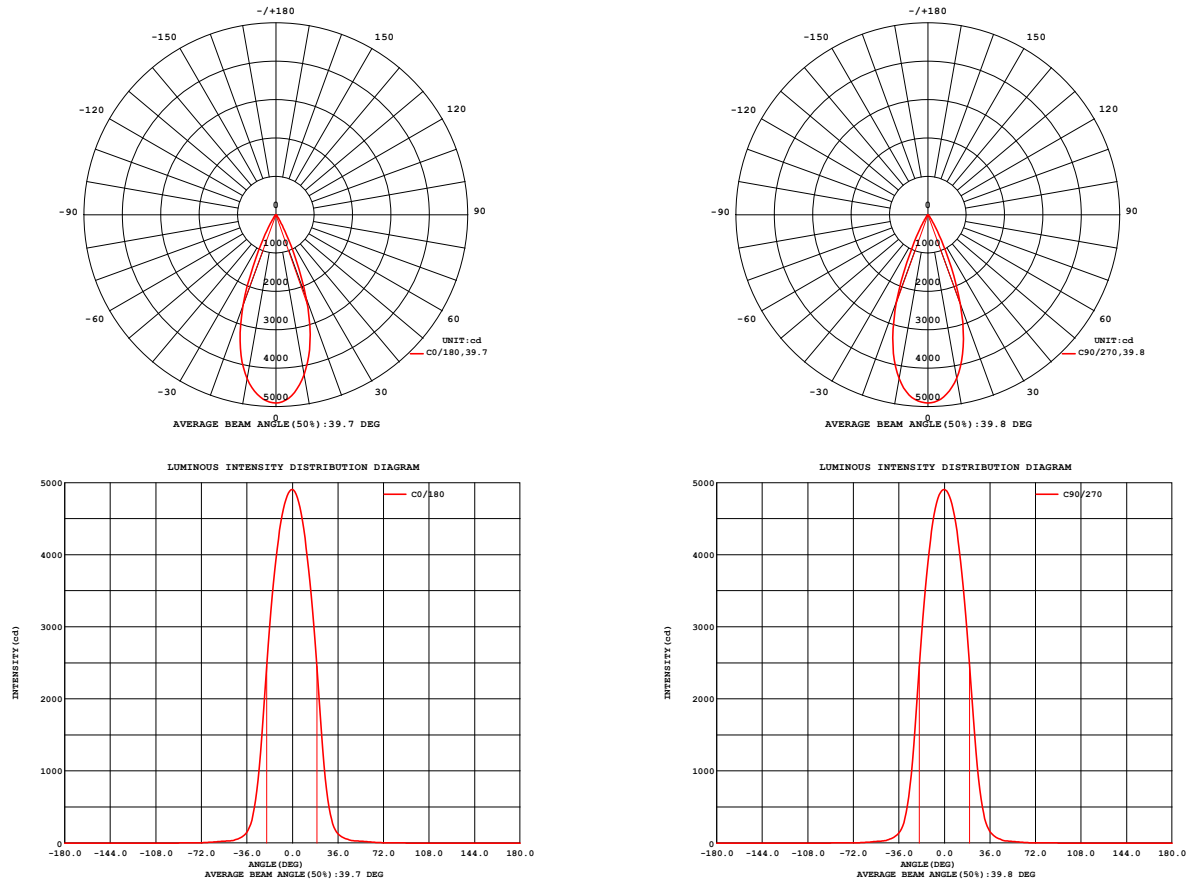


Fig. C0/C180

Fig. C90/C270

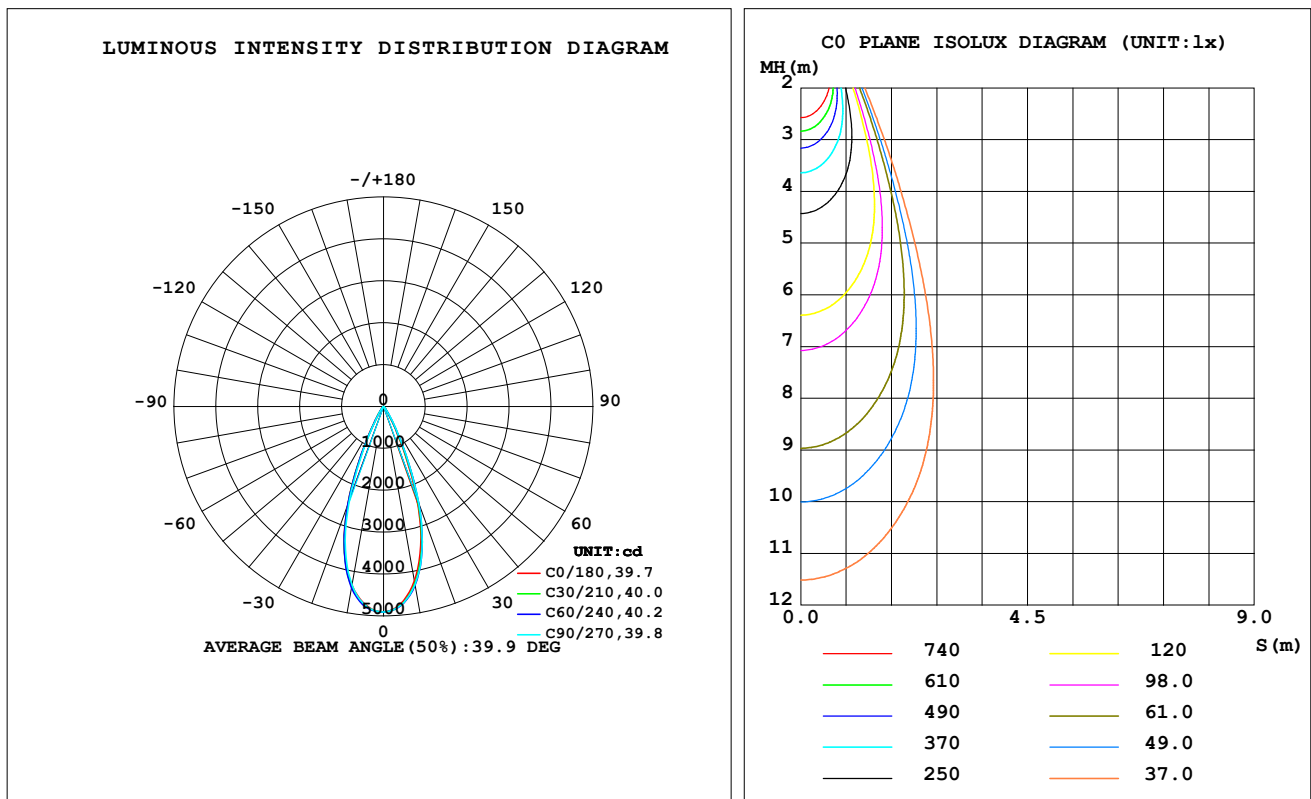
C Range: 0 - 360DEG  
C Interval: 30.0DEG  
Test Speed: HIGH  
Temperature: 25.3 °C  
Operators: zoe  
Test Date: 2023-11-4

Range: 0 - 180DEG  
Interval: 1.0DEG  
Test System: EVERFINE GO-SPEX500\_V1 SYSTEM V2.00.461  
Humidity: 65.0%  
Test Distance: 3.160m [K=1.0000]  
Remarks: LAMP: BXRE-30G2000-C-83 Ra: 90  
LENS: PM-1083A 24R  
DRIVER: PUP40A-1WMC-850 700mA  
30minutes warm-up

## LUMINAIRE PHOTOMETRIC TEST REPORT

Test:U:120.03V I:0.2304A P:27.421W PF:0.9902 Freq:59.98Hz Lamp Flux:2796.6x1 lm		
NAME: 2318.223-ACOT-84-AM	TYPE:	WEIGHT:
SPEC.: 3000K	DIM.:	SERIAL No.: 2311041309
MFR.: RISE	SUR.: 0.00984704m2	Shielding Angle:

DATA OF LAMP		PHOTOMETRIC DATA				Eff: 78.74 lm/W
MODEL	Bridgelux	I <sub>max</sub> (cd)	4903	S/MH (C0/180)		0.62
NOMINAL POWER(W)	27	LOR(%)	77.2	S/MH (C90/270)		0.61
RATED VOLTAGE(V)	120	TOTAL FLUX(lm)	2159.0	UP, DN (C0-180)		0.0, 38.9
NOMINAL FLUX(lm)	2796.6	CIE CLASS	DIRECT	UP, DN (C180-360)		0.0, 38.3
LAMPS INSIDE	1	up (%)	0.0	CIBSE SHR NOM		0.50
TEST VOLTAGE (V)	120	down (%)	77.2	CIBSE SHR MAX		0.65



C Range: 0 - 360DEG  
C Interval: 30.0DEG  
Test Speed: HIGH  
Temperature: 25.3 °C  
Operators: zoe  
Test Date: 2023-11-4

Range: 0 - 180DEG  
Interval: 1.0DEG  
Test System: EVERFINE GO-SPEX500\_V1 SYSTEM V2.00.461  
Humidity: 65.0%  
Test Distance: 3.160m [K=1.0000]  
Remarks: LAMP: BXRE-30G2000-C-83 Ra: 90  
LENS: PM-1083A 24R  
DRIVER: PUP40A-1WMC-850 700mA  
30minutes warm-up

## ZONAL FLUX DIAGRAM

### ZONAL FLUX DIAGRAM:

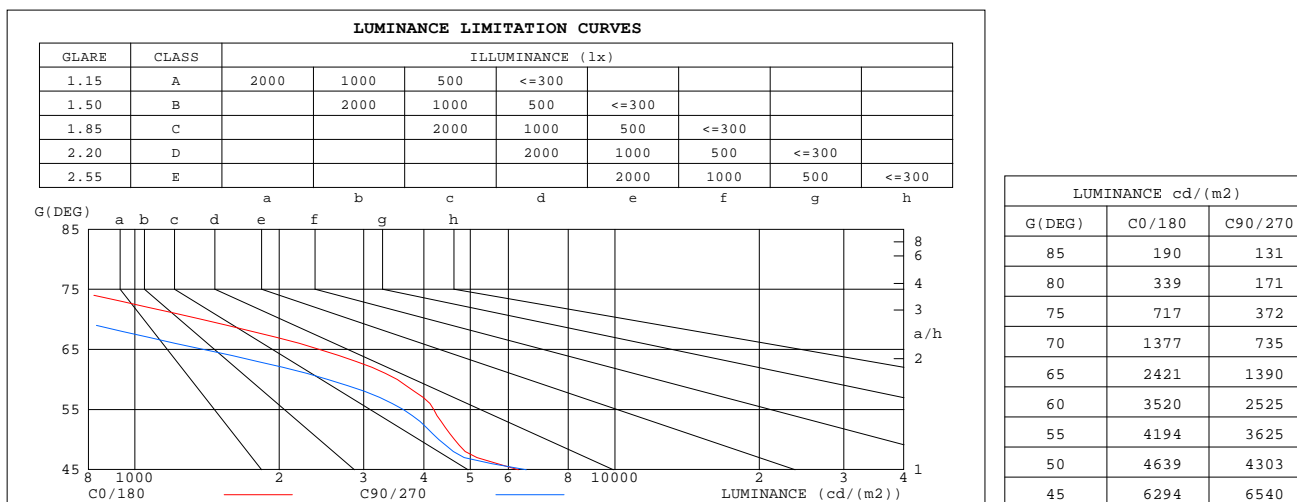
	C0	C45	C90	C135	C180	C225	C270	C315		zone	total	%lum,lamp
10	4231	4316	4321	4301	4338	4387	4328	4228	0- 10	439.9	439.9	20.4,15.7
20	2313	2427	2466	2489	2513	2499	2390	2313	10- 20	957.4	1397	64.7,50
30	399.4	471.1	506.1	504.4	480.0	472.6	425.9	398.5	20- 30	569.6	1967	91.1,70.3
40	77.45	87.67	91.25	89.22	83.21	83.38	79.70	75.24	30- 40	125.3	2092	96.9,74.8
50	29.35	31.12	27.24	28.82	29.10	27.72	26.53	27.85	40- 50	36.66	2129	98.6,76.1
60	17.32	15.55	12.43	15.77	17.47	14.77	11.74	15.14	50- 60	19.76	2149	99.5,76.8
70	4.633	3.834	2.476	3.807	4.921	3.722	2.401	3.625	60- 70	8.544	2157	99.9,77.1
80	0.5801	0.4049	0.2918	0.3605	0.6161	0.3729	0.2365	0.3160	70- 80	1.679	2159	100,77.2
90	0	0	0	0	0	0	0	0	80- 90	0.1430	2159	100,77.2
100	0	0	0	0	0	0	0	0	90-100	0	2159	100,77.2
110	0	0	0	0	0	0	0	0	100-110	0	2159	100,77.2
120	0	0	0	0	0	0	0	0	110-120	0	2159	100,77.2
130	0	0	0	0	0	0	0	0	120-130	0	2159	100,77.2
140	0	0	0	0	0	0	0	0	130-140	0	2159	100,77.2
150	0	0	0	0	0	0	0	0	140-150	0	2159	100,77.2
160	0	0	0	0	0	0	0	0	150-160	0	2159	100,77.2
170	0	0	0	0	0	0	0	0	160-170	0	2159	100,77.2
180	0	0	0	0	0	0	0	0	170-180	0	2159	100,77.2
DEG	LUMINOUS INTENSITY:cd									UNIT:lm		

C Range: 0 - 360DEG  
C Interval: 30.0DEG  
Test Speed: HIGH  
Temperature:25.3℃  
Operators:zoe  
Test Date:2023-11-4

Range: 0 - 180DEG  
Interval: 1.0DEG  
Test System:EVERFINE GO-SPEX500\_V1 SYSTEM V2.00.461  
Humidity:65.0%  
Test Distance:3.160m [K=1.0000]  
Remarks: LAMP:BXRE-30G2000-C-83 Ra:90  
LENS:PM-1083A 24R  
DRIVER: PUP40A-1WMC-850 700mA  
30minutes warm-up

## LUMINANCE LIMITATION CURVES

Test:U:120.03V I:0.2304A P:27.421W PF:0.9902 Freq:59.98Hz Lamp Flux:2796.6x1 lm		
NAME: 2318.223-ACOT-84-AM	TYPE:	WEIGHT:
SPEC.: 3000K	DIM.:	SERIAL No.: 2311041309
MFR.: RISE	SUR.: 0.00984704m2	Shielding Angle:



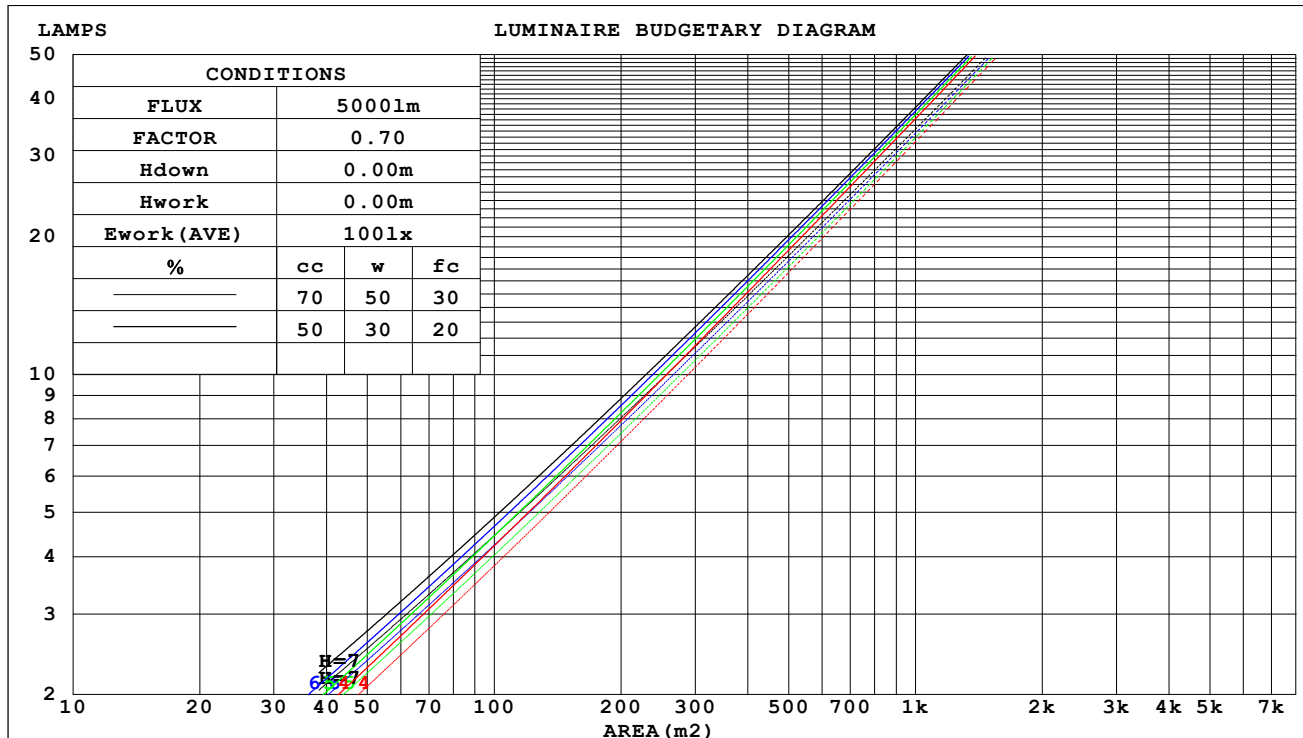
C Range: 0 - 360DEG  
C Interval: 30.0DEG  
Test Speed: HIGH  
Temperature:25.3℃  
Operators:zoe  
Test Date:2023-11-4

Range: 0 - 180DEG  
Interval: 1.0DEG  
Test System:EVERFINE GO-SPEX500\_V1 SYSTEM V2.00.461  
Humidity:65.0%  
Test Distance:3.160m [K=1.0000]  
Remarks: LAMP:BXRE-30G2000-C-83 Ra:90  
LENS:PM-1083A 24R  
DRIVER: PUP40A-1WMC-850 700mA  
30minutes warm-up

## CU AND LUMINAIRE BUDGETARY ESTIMATE DIAGRAM

Test:U:120.03V I:0.2304A P:27.421W PF:0.9902 Freq:59.98Hz Lamp Flux:2796.6x1 lm		
NAME: 2318.223-ACOT-84-AM	TYPE:	WEIGHT:
SPEC.: 3000K	DIM.:	SERIAL No.: 2311041309
MFR.: RISE	SUR.: 0.00984704m2	Shielding Angle:

cc	80%			70%			50%			30%			10%			0														
w	50%	30%	10%	50%	30%	10%	50%	30%	10%	50%	30%	10%	50%	30%	10%	0														
fc	20%			20%			20%			20%			20%			0														
RCR	RCR:Room Cavity Ratio															Coefficients of Utilization(CU)														
0.0	.92	.92	.92	.90	.90	.90	.86	.86	.86	.82	.82	.82	.79	.79	.79	.77														
1.0	.86	.85	.83	.85	.83	.82	.82	.81	.80	.79	.78	.77	.76	.76	.75	.74														
2.0	.82	.79	.77	.80	.78	.76	.78	.76	.74	.76	.74	.73	.74	.72	.71	.70														
3.0	.77	.74	.72	.76	.73	.71	.74	.72	.70	.73	.71	.69	.71	.69	.68	.67														
4.0	.74	.70	.67	.73	.70	.67	.71	.68	.66	.70	.67	.66	.68	.66	.65	.64														
5.0	.70	.66	.64	.69	.66	.63	.68	.65	.63	.67	.64	.62	.66	.64	.62	.61														
6.0	.67	.63	.61	.66	.63	.60	.65	.62	.60	.64	.62	.60	.63	.61	.59	.58														
7.0	.64	.60	.58	.64	.60	.58	.63	.60	.57	.62	.59	.57	.61	.59	.57	.56														
8.0	.62	.58	.55	.61	.58	.55	.60	.57	.55	.60	.57	.55	.59	.56	.54	.54														
9.0	.59	.55	.53	.59	.55	.53	.58	.55	.53	.58	.55	.53	.57	.54	.52	.52														
10.0	.57	.53	.51	.57	.53	.51	.56	.53	.51	.55	.53	.51	.55	.52	.50	.50														



C Range: 0 - 360DEG  
C Interval: 30.0DEG  
Test Speed: HIGH  
Temperature:25.3℃  
Operators:zoe  
Test Date:2023-11-4

Range: 0 - 180DEG  
Interval: 1.0DEG  
Test System:EVERFINE GO-SPEX500\_V1 SYSTEM V2.00.461  
Humidity:65.0%  
Test Distance:3.160m [K=1.0000]  
Remarks: LAMP:BXRE-30G2000-C-83 Ra:90  
LENS:PM-1083A 24R  
DRIVER: PUP40A-1WMC-850 700mA  
30minutes warm-up

### WEC AND CCEC

Test:U:120.03V I:0.2304A P:27.421W PF:0.9902 Freq:59.98Hz Lamp Flux:2796.6x1 lm		
NAME: 2318.223-ACOT-84-AM	TYPE:	WEIGHT:
SPEC.: 3000K	DIM.:	SERIAL No.: 2311041309
MFR.: RISE	SUR.: 0.00984704m2	Shielding Angle:

cc	80%			70%			50%			30%			10%			0
w	50%	30%	10%	50%	30%	10%	50%	30%	10%	50%	30%	10%	50%	30%	10%	0
fc	20%			20%			20%			20%			20%			0
RCR	RCR:Room Cavity Ratio						Wall Exitance Coefficients (WEC)									
0.0																
1.0	.118	.067	.021	.113	.065	.021	.104	.059	.019	.095	.055	.018	.087	.050	.016	
2.0	.111	.061	.019	.107	.059	.018	.099	.055	.017	.092	.051	.016	.085	.048	.015	
3.0	.105	.056	.017	.101	.054	.016	.095	.051	.016	.088	.048	.015	.083	.046	.014	
4.0	.099	.051	.015	.096	.050	.015	.090	.048	.014	.085	.046	.014	.080	.043	.013	
5.0	.094	.048	.014	.091	.047	.014	.086	.045	.013	.082	.043	.013	.078	.041	.012	
6.0	.089	.045	.013	.087	.044	.013	.083	.042	.012	.079	.041	.012	.075	.040	.012	
7.0	.085	.042	.012	.083	.041	.012	.080	.040	.012	.076	.039	.011	.073	.038	.011	
8.0	.082	.040	.011	.080	.039	.011	.076	.038	.011	.073	.037	.011	.070	.036	.011	
9.0	.078	.038	.011	.077	.037	.010	.074	.036	.010	.071	.036	.010	.068	.035	.010	
10.0	.075	.036	.010	.074	.036	.010	.071	.035	.010	.069	.034	.010	.066	.033	.010	

cc	80%			70%			50%			30%			10%			0	
w	50%	30%	10%	50%	30%	10%	50%	30%	10%	50%	30%	10%	50%	30%	10%	0	
fc	20%			20%			20%			20%			20%			0	
RCR	RCR:Room Cavity Ratio						Ceiling Cavity Exitance Coefficients (CCEC)										
0.0	.147	.147	.147	.126	.126	.126	.086	.086	.086	.049	.049	.049	.016	.016	.016		
1.0	.131	.122	.113	.112	.104	.097	.077	.072	.067	.044	.042	.039	.014	.013	.013		
2.0	.118	.102	.089	.101	.088	.077	.069	.061	.054	.040	.035	.032	.013	.011	.010		
3.0	.107	.088	.072	.092	.076	.062	.063	.052	.044	.036	.031	.026	.012	.010	.008		
4.0	.098	.076	.059	.084	.066	.051	.058	.046	.036	.033	.027	.021	.011	.009	.007		
5.0	.091	.067	.049	.078	.058	.043	.054	.040	.030	.031	.024	.018	.010	.008	.006		
6.0	.084	.059	.041	.072	.051	.036	.050	.036	.025	.029	.021	.015	.009	.007	.005		
7.0	.079	.053	.035	.068	.046	.030	.047	.032	.022	.027	.019	.013	.009	.006	.004		
8.0	.074	.048	.030	.064	.042	.026	.044	.029	.019	.026	.017	.011	.008	.006	.004		
9.0	.070	.044	.026	.060	.038	.023	.042	.027	.016	.024	.016	.010	.008	.005	.003		
10.0	.066	.040	.023	.057	.035	.020	.040	.025	.014	.023	.015	.008	.008	.005	.003		

C Range: 0 - 360DEG  
C Interval: 30.0DEG  
Test Speed: HIGH  
Temperature:25.3℃  
Operators:zoe  
Test Date:2023-11-4

Range: 0 - 180DEG  
Interval: 1.0DEG  
Test System:EVERFINE GO-SPEX500\_V1 SYSTEM V2.00.461  
Humidity:65.0%  
Test Distance:3.160m [K=1.0000]  
Remarks: LAMP:BXRE-30G2000-C-83 Ra:90  
LENS:PM-1083A 24R  
DRIVER: PUP40A-1WMC-850 700mA  
30minutes warm-up

UGR(Unified Glare Rating) Table

Test:U:120.03V I:0.2304A P:27.421W PF:0.9902 Freq:59.98Hz Lamp Flux:2796.6x1 lm										
NAME: 2318.223-ACOT-84-AM					TYPE:			WEIGHT:		
SPEC.: 3000K					DIM.:			SERIAL No.: 2311041309		
MFR.: RISE					SUR.: 0.00984704m2			Shielding Angle:		
ceiling/cavity	0.7	0.7	0.5	0.5	0.3	0.7	0.7	0.5	0.5	0.3
walls	0.5	0.3	0.5	0.3	0.3	0.5	0.3	0.5	0.3	0.3
working plane	0.2	0.2	0.2	0.2	0.2	0.2	0.2	0.2	0.2	0.2
Room dimensions	Viewed crosswise					Viewed endwise				
x = 2H y = 2H	7.6	8.3	7.8	8.5	8.6	7.9	8.7	8.1	8.8	9.0
3H	7.6	8.3	7.9	8.5	8.7	7.8	8.5	8.1	8.7	8.9
4H	7.6	8.2	7.8	8.4	8.7	7.8	8.4	8.0	8.6	8.9
6H	7.5	8.1	7.8	8.4	8.6	7.7	8.3	8.0	8.5	8.8
8H	7.4	8.1	7.7	8.3	8.6	7.6	8.2	7.9	8.5	8.7
12H	7.4	8.0	7.7	8.2	8.5	7.6	8.2	7.9	8.4	8.7
4H 2H	7.5	8.2	7.8	8.4	8.6	7.9	8.5	8.1	8.7	9.0
3H	7.6	8.2	7.9	8.4	8.7	7.8	8.4	8.1	8.6	8.9
4H	7.5	8.1	7.9	8.4	8.7	7.7	8.2	8.0	8.5	8.8
6H	7.4	7.9	7.8	8.3	8.6	7.6	8.1	8.0	8.4	8.7
8H	7.4	7.8	7.8	8.2	8.5	7.5	8.0	7.9	8.3	8.7
12H	7.3	7.7	7.8	8.1	8.5	7.5	7.9	7.9	8.3	8.6
8H 4H	7.4	7.8	7.8	8.2	8.5	7.5	8.0	7.9	8.3	8.7
6H	7.3	7.7	7.7	8.1	8.5	7.4	7.8	7.9	8.2	8.6
8H	7.2	7.6	7.7	8.0	8.4	7.4	7.7	7.8	8.1	8.6
12H	7.2	7.5	7.7	7.9	8.4	7.3	7.6	7.8	8.0	8.5
12H 4H	7.3	7.7	7.7	8.1	8.5	7.5	7.9	7.9	8.3	8.7
6H	7.2	7.6	7.7	8.0	8.4	7.4	7.7	7.8	8.1	8.6
8H	7.2	7.5	7.7	7.9	8.4	7.3	7.6	7.8	8.0	8.5
Variations with the observer position at spacings(CIE Pub.117):										
S = 1.0H	+ 1.6 / - 2.5					+ 2.5 / - 4.0				
1.5H	+ 2.8 / - 2.0					+ 4.1 / - 2.6				
2.0H	+ 1.6 / - 1.8					+ 2.7 / - 3.2				

CIE Pub.117, 2797 lm Total Lamp Luminous Flux Correct (8log(F/F0) = 3.6)  
Area: 0.00984704 m2

C Range: 0 - 360DEG  
C Interval: 30.0DEG  
Test Speed: HIGH  
Temperature:25.3℃  
Operators:zoe  
Test Date:2023-11-4

Range: 0 - 180DEG  
Interval: 1.0DEG  
Test System:EVERFINE GO-SPEX500\_V1 SYSTEM V2.00.461  
Humidity:65.0%  
Test Distance:3.160m [K=1.0000]  
Remarks: LAMP:BXRE-30G2000-C-83 Ra:90  
LENS:PM-1083A 24R  
DRIVER: PUP40A-1WMC-850 700mA  
30minutes warm-up



### UTILIZATION FACTORS TABLE

Test:U:120.03V I:0.2304A P:27.421W PF:0.9902 Freq:59.98Hz Lamp Flux:2796.6x1 lm		
NAME: 2318.223-ACOT-84-AM	TYPE:	WEIGHT:
SPEC.: 3000K	DIM.:	SERIAL No.: 2311041309
MFR.: RISE	SUR.: 0.00984704m2	Shielding Angle:

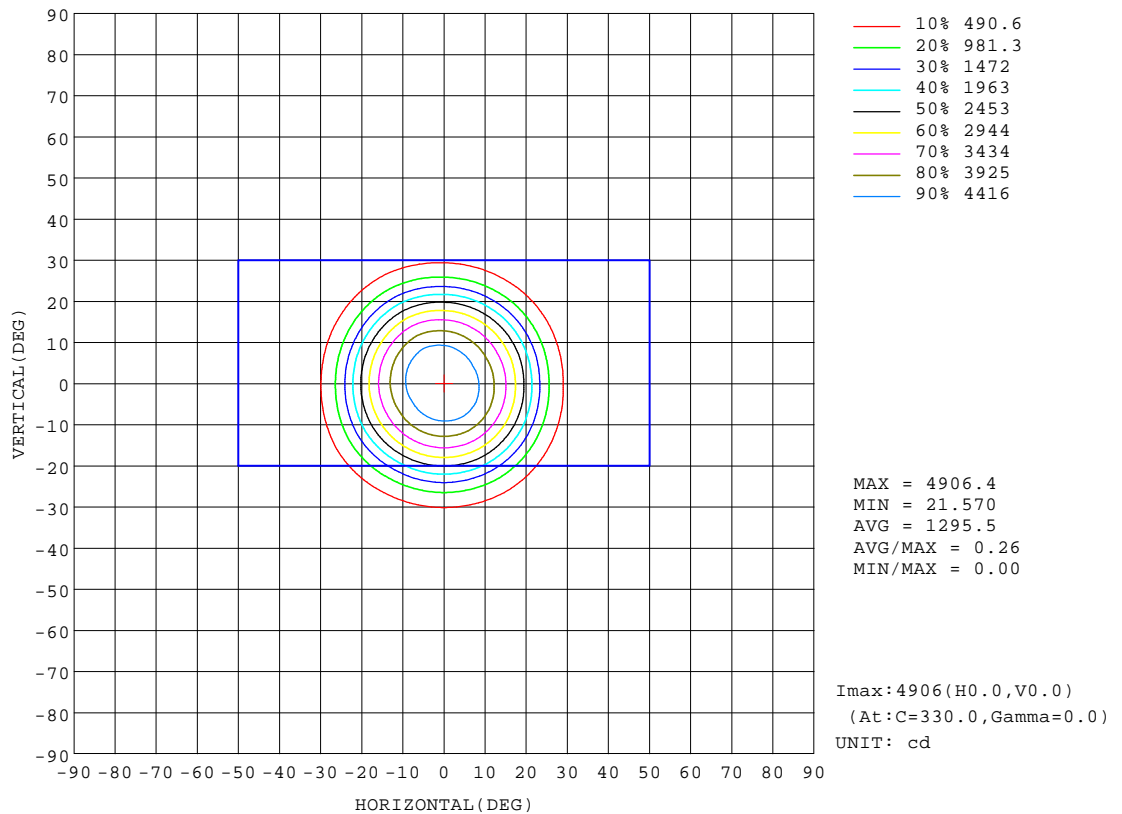
REFLECTANCE										
Ceiling	0.8	0.8	0.8	0.7	0.7	0.7	0.5	0.5	0.5	0
Walls	0.7	0.5	0.3	0.7	0.5	0.3	0.7	0.5	0.3	0
Working plane	0.2	0.2	0.2	0.2	0.2	0.2	0.2	0.2	0.2	0
ROOM INDEX	UTILIZATION FACTORS (PERCENT) $k(RI) \times RCR = 5$									
k = 0.60	69	65	62	69	64	62	68	64	62	59
0.80	75	70	68	74	70	68	73	70	67	65
1.00	78	74	71	77	73	71	76	73	71	68
1.25	81	77	74	80	76	74	78	76	73	70
1.50	83	79	77	82	79	76	80	77	76	72
2.00	84	81	79	83	81	78	81	79	77	73
2.50	86	83	81	84	82	80	82	80	79	74
3.00	87	84	82	85	83	81	83	81	80	75
4.00	88	86	85	87	85	84	84	83	81	76
5.00	89	88	86	88	86	85	84	84	83	77
ROOM INDEX	UF (total)									Direct
According to DIN EN 13032-2 2004			Suspended					SHRNOM = 1.25		

C Range: 0 - 360DEG  
C Interval: 30.0DEG  
Test Speed: HIGH  
Temperature: 25.3 °C  
Operators: zoe  
Test Date: 2023-11-4

Range: 0 - 180DEG  
Interval: 1.0DEG  
Test System: EVERFINE GO-SPEX500\_V1 SYSTEM V2.00.461  
Humidity: 65.0%  
Test Distance: 3.160m [K=1.0000]  
Remarks: LAMP: BXRE-30G2000-C-83 Ra: 90  
LENS: PM-1083A 24R  
DRIVER: PUP40A-1WMC-850 700mA  
30minutes warm-up

## ISOCANDELA DIAGRAM

Test:U:120.03V I:0.2304A P:27.421W PF:0.9902 Freq:59.98Hz Lamp Flux:2796.6x1 lm		
NAME: 2318.223-ACOT-84-AM	TYPE:	WEIGHT:
SPEC.: 3000K	DIM.:	SERIAL No.: 2311041309
MFR.: RISE	SUR.: 0.00984704m2	Shielding Angle:

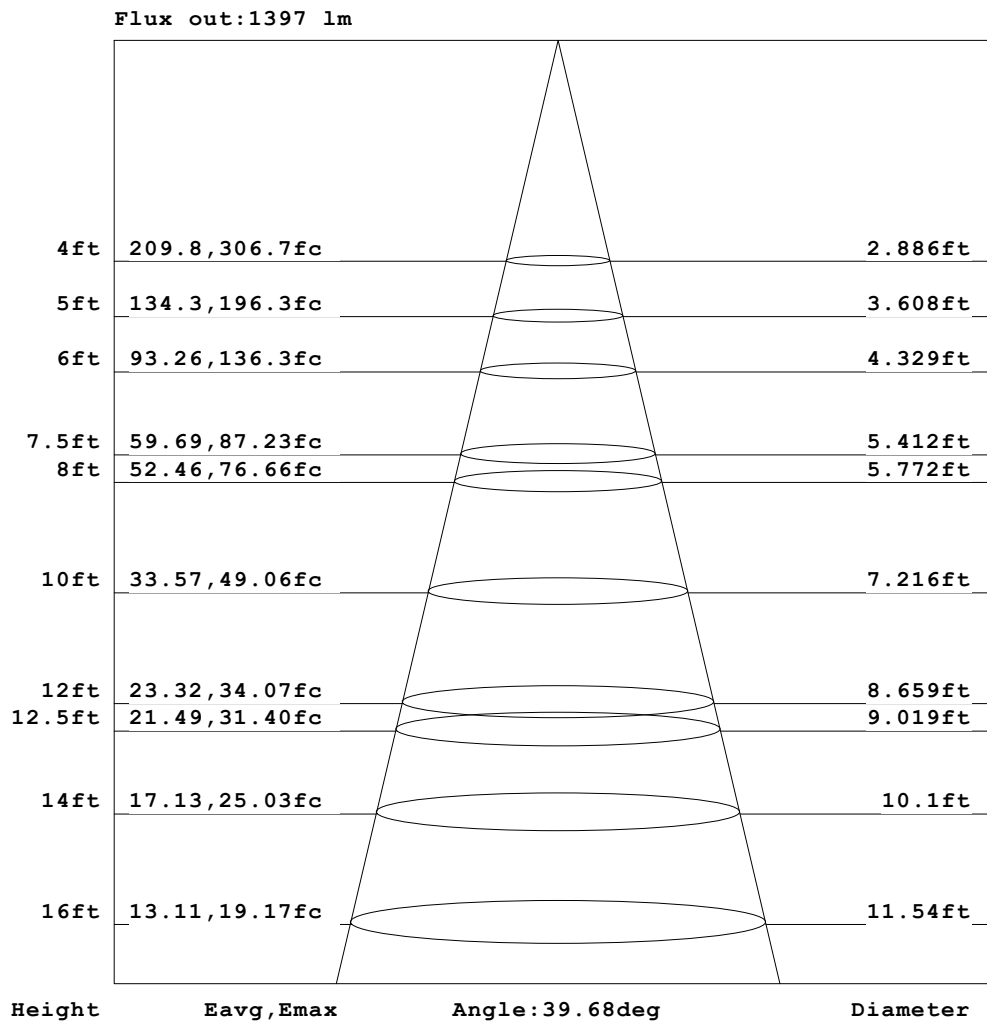


C Range: 0 - 360DEG  
C Interval: 30.0DEG  
Test Speed: HIGH  
Temperature: 25.3 °C  
Operators: zoe  
Test Date: 2023-11-4

Range: 0 - 180DEG  
Interval: 1.0DEG  
Test System: EVERFINE GO-SPEX500\_V1 SYSTEM V2.00.461  
Humidity: 65.0%  
Test Distance: 3.160m [K=1.0000]  
Remarks: LAMP: BXRE-30G2000-C-83 Ra: 90  
LENS: PM-1083A 24R  
DRIVER: PUP40A-1WMC-850 700mA  
30minutes warm-up

## AAI Figure

Test:U:120.03V I:0.2304A P:27.421W PF:0.9902 Freq:59.98Hz Lamp Flux:2796.6x1 lm		
NAME: 2318.223-ACOT-84-AM	TYPE:	WEIGHT:
SPEC.: 3000K	DIM.:	SERIAL No.: 2311041309
MFR.: RISE	SUR.: 0.00984704m2	Shielding Angle:



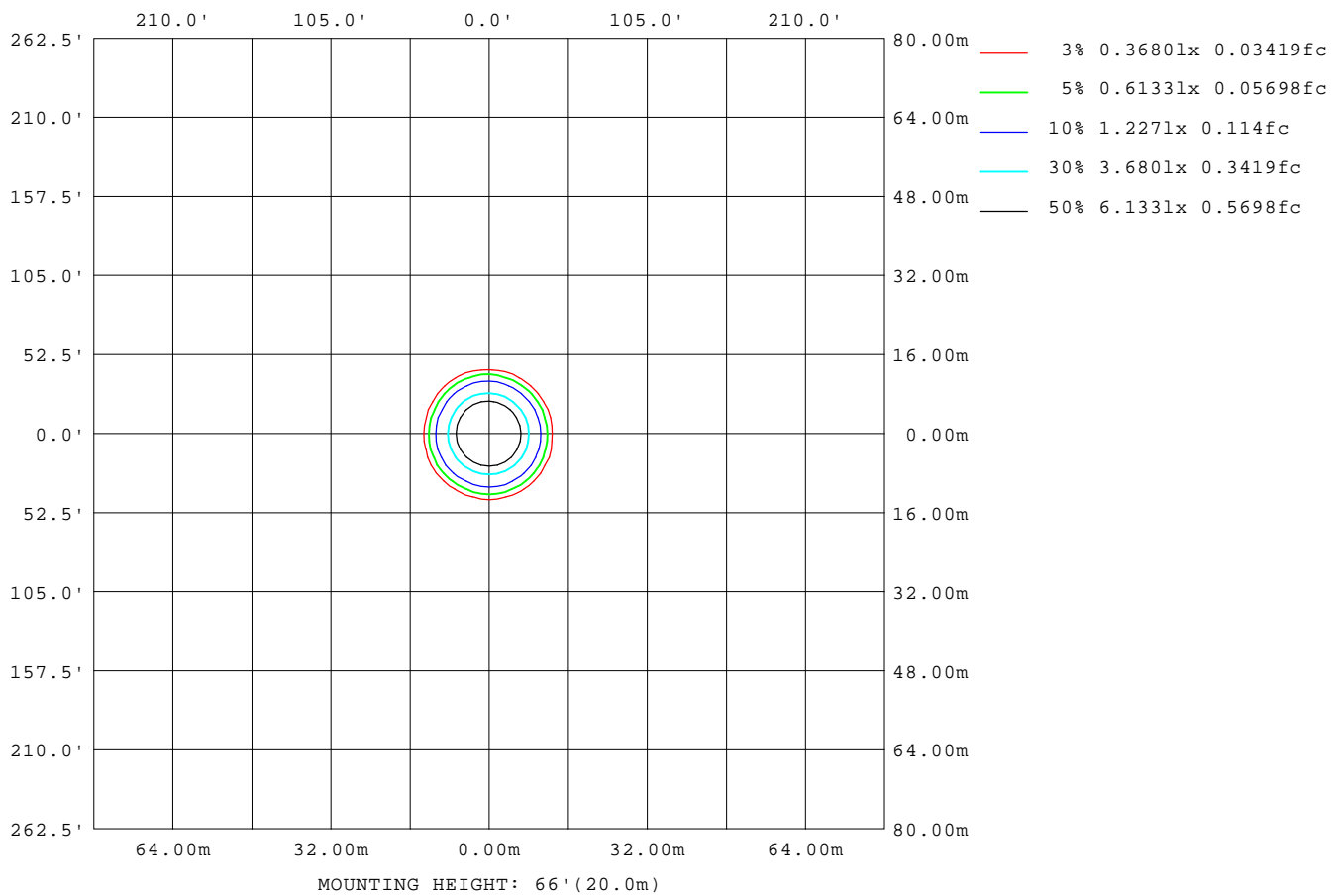
Note: The Curves indicate the illuminated area and the average illumination when the luminaire is at different distance.

C Range: 0 - 360DEG  
C Interval: 30.0DEG  
Test Speed: HIGH  
Temperature: 25.3 °C  
Operators: zoe  
Test Date: 2023-11-4

Range: 0 - 180DEG  
Interval: 1.0DEG  
Test System: EVERFINE GO-SPEX500\_V1 SYSTEM V2.00.461  
Humidity: 65.0%  
Test Distance: 3.160m [K=1.0000]  
Remarks: LAMP: BXRE-30G2000-C-83 Ra: 90  
LENS: PM-1083A 24R  
DRIVER: PUP40A-1WMC-850 700mA  
30minutes warm-up

## ISOLUX DIAGRAM

Test:U:120.03V I:0.2304A P:27.421W PF:0.9902 Freq:59.98Hz Lamp Flux:2796.6x1 lm		
NAME: 2318.223-ACOT-84-AM	TYPE:	WEIGHT:
SPEC.: 3000K	DIM.:	SERIAL No.: 2311041309
MFR.: RISE	SUR.: 0.00984704m2	Shielding Angle:



C Range: 0 - 360DEG  
C Interval: 30.0DEG  
Test Speed: HIGH  
Temperature: 25.3 °C  
Operators: zoe  
Test Date: 2023-11-4

Range: 0 - 180DEG  
Interval: 1.0DEG  
Test System: EVERFINE GO-SPEX500\_V1 SYSTEM V2.00.461  
Humidity: 65.0%  
Test Distance: 3.160m [K=1.0000]  
Remarks: LAMP: BXRE-30G2000-C-83 Ra: 90  
LENS: PM-1083A 24R  
DRIVER: PUP40A-1WMC-850 700mA  
30minutes warm-up

## LED Avg.L Report

Test:U:120.03V I:0.2304A P:27.421W PF:0.9902 Freq:59.98Hz Lamp Flux:2796.6x1 lm		
NAME: 2318.223-ACOT-84-AM	TYPE:	WEIGHT:
SPEC.: 3000K	DIM.:	SERIAL No.: 2311041309
MFR.: RISE	SUR.: 0.00984704m2	Shielding Angle:

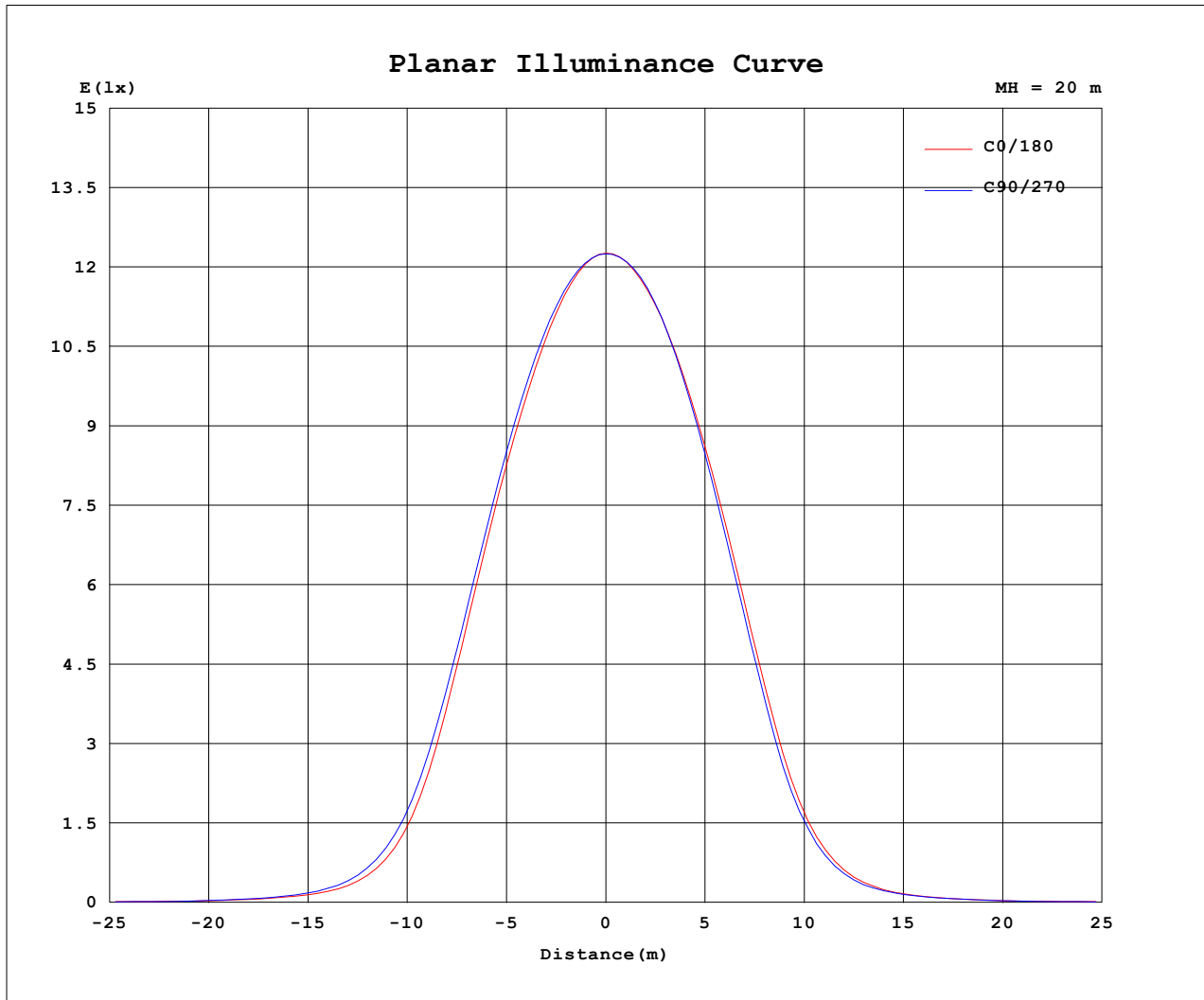
AvgL	cd/m2
L_0~180 (65) av	2470
L_0~180 (75) av	739
L_0~180 (85) av	178
L_90~270 (65) av	1385
L_90~270 (75) av	354
L_90~270 (85) av	122
L_45 (65) av	2035
L_45 (75) av	534
L_45 (85) av	79

Standard: GB/T 29293-2012

C Range: 0 - 360DEG  
C Interval: 30.0DEG  
Test Speed: HIGH  
Temperature:25.3℃  
Operators:zoe  
Test Date:2023-11-4

Range: 0 - 180DEG  
Interval: 1.0DEG  
Test System:EVERFINE GO-SPEX500\_V1 SYSTEM V2.00.461  
Humidity:65.0%  
Test Distance:3.160m [K=1.0000]  
Remarks: LAMP:BXRE-30G2000-C-83 Ra:90  
LENS:PM-1083A 24R  
DRIVER: PUP40A-1WMC-850 700mA  
30minutes warm-up

## Planar Illuminance Curve



C Range: 0 - 360DEG  
 C Interval: 30.0DEG  
 Test Speed: HIGH  
 Temperature: 25.3 °C  
 Operators: zoe  
 Test Date: 2023-11-4

Range: 0 - 180DEG  
 Interval: 1.0DEG  
 Test System: EVERFINE GO-SPEX500\_V1 SYSTEM V2.00.461  
 Humidity: 65.0%  
 Test Distance: 3.160m [K=1.0000]  
 Remarks: LAMP: BXRE-30G2000-C-83 Ra: 90  
 LENS: PM-1083A 24R  
 DRIVER: PUP40A-1WMC-850 700mA  
 30minutes warm-up

## LUMINOUS DISTRIBUTION INTENSITY DATA

Test:U:120.03V I:0.2304A P:27.421W PF:0.9902 Freq:59.98Hz Lamp Flux:2796.6x1 lm		
NAME: 2318.223-ACOT-84-AM	TYPE:	WEIGHT:
SPEC.: 3000K	DIM.:	SERIAL No.: 2311041309
MFR.: RISE	SUR.: 0.00984704m2	Shielding Angle:

Table--1

UNIT: cd

C (DEG) (DEG)	0	30	60	90	120	150	180	210	240	270	300	330						
0	4903	4903	4903	4903	4903	4903	4903	4903	4903	4903	4903	4903						
5	4728	4756	4767	4760	4746	4743	4763	4788	4805	4781	4743	4719						
10	4231	4298	4333	4321	4308	4293	4338	4374	4400	4328	4254	4202						
15	3443	3511	3563	3559	3559	3567	3604	3611	3626	3531	3456	3417						
20	2313	2397	2458	2466	2471	2507	2513	2498	2500	2390	2323	2304						
25	1086	1180	1250	1271	1253	1311	1259	1241	1246	1142	1093	1093						
30	399	448	494	506	491	517	480	472	473	426	399	398						
35	154	172	192	198	187	197	178	174	178	163	154	150						
40	77.5	84.8	90.6	91.2	89.5	89.0	83.2	82.2	84.5	79.7	76.5	74.0						
45	43.8	49.1	46.5	45.6	46.5	47.6	45.1	43.6	42.9	40.6	41.9	41.8						
50	29.3	33.7	28.6	27.2	28.1	29.5	29.1	28.2	27.2	26.5	27.5	28.2						
55	23.7	27.1	21.6	20.5	21.7	23.7	23.6	22.7	20.5	19.3	20.9	23.0						
60	17.3	17.2	13.9	12.4	14.2	17.4	17.5	16.3	13.2	11.7	13.6	16.7						
65	10.1	10.2	6.88	5.79	7.11	10.1	10.5	9.76	6.69	5.74	6.95	9.65						
70	4.63	4.76	2.91	2.48	3.02	4.59	4.92	4.62	2.83	2.40	2.92	4.33						
75	1.83	1.80	1.07	0.95	1.08	1.65	1.94	1.76	1.01	0.85	1.02	1.52						
80	0.58	0.52	0.29	0.29	0.30	0.42	0.62	0.48	0.26	0.24	0.26	0.38						
85	0.16	0.12	0.09	0.11	0.06	0.06	0.14	0.08	0.07	0.10	0.06	0.07						
90	0.00	0.00	0.00	0.00	0.00	0.00	0.00	0.00	0.00	0.00	0.00	0.00						
95	0.00	0.00	0.00	0.00	0.00	0.00	0.00	0.00	0.00	0.00	0.00	0.00						
100	0.00	0.00	0.00	0.00	0.00	0.00	0.00	0.00	0.00	0.00	0.00	0.00						
105	0.00	0.00	0.00	0.00	0.00	0.00	0.00	0.00	0.00	0.00	0.00	0.00						
110	0.00	0.00	0.00	0.00	0.00	0.00	0.00	0.00	0.00	0.00	0.00	0.00						
115	0.00	0.00	0.00	0.00	0.00	0.00	0.00	0.00	0.00	0.00	0.00	0.00						
120	0.00	0.00	0.00	0.00	0.00	0.00	0.00	0.00	0.00	0.00	0.00	0.00						
125	0.00	0.00	0.00	0.00	0.00	0.00	0.00	0.00	0.00	0.00	0.00	0.00						
130	0.00	0.00	0.00	0.00	0.00	0.00	0.00	0.00	0.00	0.00	0.00	0.00						
135	0.00	0.00	0.00	0.00	0.00	0.00	0.00	0.00	0.00	0.00	0.00	0.00						
140	0.00	0.00	0.00	0.00	0.00	0.00	0.00	0.00	0.00	0.00	0.00	0.00						
145	0.00	0.00	0.00	0.00	0.00	0.00	0.00	0.00	0.00	0.00	0.00	0.00						
150	0.00	0.00	0.00	0.00	0.00	0.00	0.00	0.00	0.00	0.00	0.00	0.00						
155	0.00	0.00	0.00	0.00	0.00	0.00	0.00	0.00	0.00	0.00	0.00	0.00						
160	0.00	0.00	0.00	0.00	0.00	0.00	0.00	0.00	0.00	0.00	0.00	0.00						
165	0.00	0.00	0.00	0.00	0.00	0.00	0.00	0.00	0.00	0.00	0.00	0.00						
170	0.00	0.00	0.00	0.00	0.00	0.00	0.00	0.00	0.00	0.00	0.00	0.00						
175	0.00	0.00	0.00	0.00	0.00	0.00	0.00	0.00	0.00	0.00	0.00	0.00						
180	0.00	0.00	0.00	0.00	0.00	0.00	0.00	0.00	0.00	0.00	0.00	0.00						

C Range: 0 - 360DEG  
C Interval: 30.0DEG  
Test Speed: HIGH  
Temperature:25.3℃  
Operators:zoe  
Test Date:2023-11-4

Range: 0 - 180DEG  
Interval: 1.0DEG  
Test System:EVERFINE GO-SPEX500\_V1 SYSTEM V2.00.461  
Humidity:65.0%  
Test Distance:3.160m [K=1.0000]  
Remarks: LAMP:BXRE-30G2000-C-83 Ra:90  
LENS:PM-1083A 24R  
DRIVER: PUP40A-1WMC-850 700mA  
30minutes warm-up